

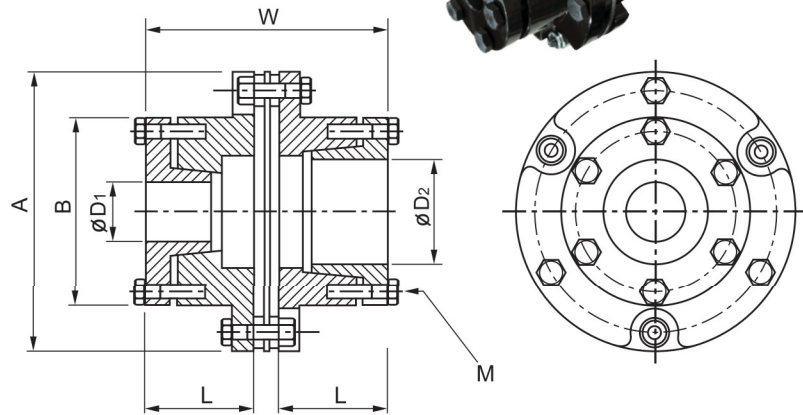
## WTM-C Flex couplings



- **Body material** : S45C
- **Buffer material** : SUS disk
- **Surface Treatment** : Dye black

### Features

- High torque
- High rigid
- Low inertia
- Zero backlash
- Applicable to large and medium servo motors
- **Fixed mode** : Fixed by free-button compression ring



### DIMENSION

unit:mm

Product No	A	B	W	L	Stock Bores D1xD2 (H8)		M
					Min D1	Max D2	
WTM-01C	70	43	68	30	12	22	4xM6
WTM-03C	80	49.5	68	30	15	25	6xM6
WTM-05C	92	62	78	35	19	35	6xM6
WTM-10C	102	70	88	40	22	45	6xM6
WTM-20C	128	85	107	48	35	55	6xM8
WTM-40C	145	100	141	65	40	65	8xM8

### SPECIFICATIONS

\*Max. Bore Moment of Inertia

\*\*Max. Bore Mass

Product No	Rated Torque (N.m)	Max. Torque (N.m)	Max. Rotational Frequency (min <sup>-1</sup> )	Moment* of Inertia (kg.m <sup>2</sup> )	Error of Eccentricity (mm)	Errors of Angularity (°)	Mass** (g)
WTM-01C	30	60	11000	1.7X10 <sup>-4</sup>	0.15	1°	0.6
WTM-03C	40	80	10700	2.7X10 <sup>-4</sup>	0.15	1°	0.6
WTM-05C	95	190	9300	5.5X10 <sup>-4</sup>	0.20	1°	0.8
WTM-10C	140	280	8400	9.7X10 <sup>-4</sup>	0.20	1°	1.0
WTM-20C	225	450	6700	3.0X10 <sup>-3</sup>	0.30	1°	1.2
WTM-40C	400	800	5900	5.3X10 <sup>-3</sup>	0.40	1°	1.4

### When Ordering

When Placing an order, make sure to include product No. and stock bores (both sides) of product.

WTM-03C-φ18 X φ22 Product No : D1 D2