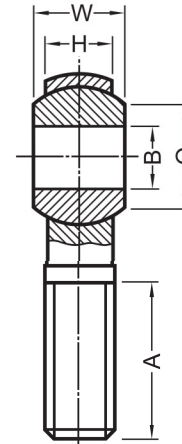
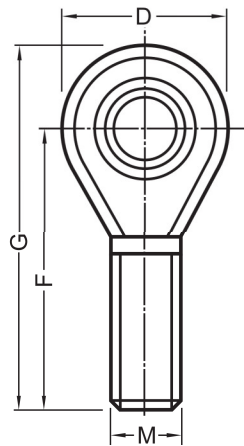


## POS



Part Number		(mm) Main dimensions										Max. Static Load (kgf)		Weight (g)
R. Hand	L. Hand	B	W	H	O	D	F	G	A	Inner ring dia $\varnothing$	Thread M	Radial	Axial	
POS 5	POS 5L	5	8	6	7.7	18	33	41	20	11.112	5x0.8	620	230	14
POS 6	POS 6L	6	9	7	8.9	20	36	45	22	12.7	6x1	690	270	21
POS 8	POS 8L	8	12	9	10.4	24	42	53	25	15.875	8x1.25	990	430	34
POS 10	POS10L	10	14	11	12.9	28	48	61	29	19.05	10x1.5	1340	630	58
POS 12	POS12L	12	16	12	15.4	32	54	69	33	22.225	12x1.75	1650	800	92
POS 14	POS14L	14	19	14	16.8	36	60	77	36	25.4	14x2	2090	1070	135
POS 16	POS16L	16	21	15	19.3	42	66	85	40	28.575	16x2	2470	1290	205
POS 18	POS18L	18	23	17	21.8	46	72	93	44	31.75	18x1.5	2990	1620	285
POS 20	POS20L	20	25	18	24.3	50	78	101	47	34.925	20x1.5	3460	1890	370
POS 22	POS22L	22	28	20	25.8	54	84	109	51	38.1	22x1.5	4070	2290	475
POS 25	POS25L	25	31	22	29.6	60	94	122	57	42.85	24x2	4950	2830	650
POS 30	POS30L	30	37	26	34.8	70	110	145	66	50.8	30x2	6550	3560	1070