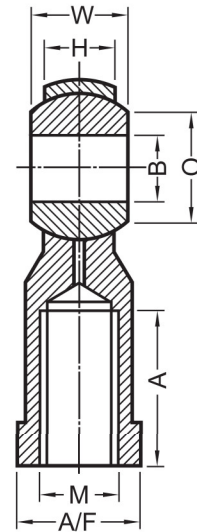
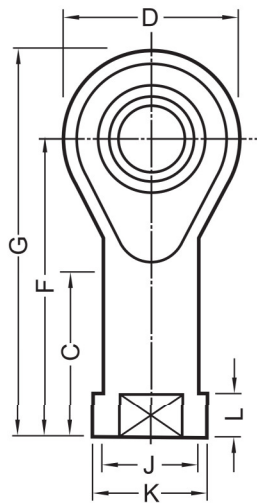


PHS



Part Number		(mm) Main dimensions													Max. Static Load (kgf)		Weight (g)	
R. Hand	L. Hand	B	W	H	O	D	F	G	A	K	J	L	A/F	Inner ring dia \varnothing	Thread M	Radial		Axial
PHS 5	PHS 5L	5	8	6	7.7	18	27	35	14	11	9	4	9	11.112	5x0.8	620	230	18
PHS 6	PHS 6L	6	9	7	8.9	20	30	39	14	13	10	5	11	12.7	6x1	690	270	27
PHS 8	PHS 8L	8	12	9	10.4	24	36	47	17	16	12.5	5	14	15.875	8x1.25	990	430	46
PHS 10	PHS 10L	10	14	11	12.9	28	43	56	21	19	15	6.5	17	19.05	10x1.5	1340	630	78
PHS 12	PHS 12L	12	16	12	15.4	32	50	65	24	22	17.5	6.5	19	22.225	12x1.75	1650	800	115
PHS 14	PHS 14L	14	19	14	16.8	36	57	74	27	25	20	8	22	25.4	14x2	2090	1070	170
PHS 16	PHS 16L	16	21	15	19.3	42	64	83	33	27	22	8	22	28.575	16x2	2470	1290	230
PHS 18	PHS 18L	18	23	17	21.8	46	71	92	36	31	25	10	27	31.75	18x1.5	2990	1620	320
PHS 20	PHS 20L	20	25	18	24.3	50	77	100	40	34	27.5	10	32	34.925	20x1.5	3460	1890	420
PHS 22	PHS 22L	22	28	20	25.8	54	84	109	43	37	30	12	32	38.1	22x1.5	4070	2290	540
PHS 25	PHS 25L	25	31	22	29.6	60	94	122	48	42	33.5	12	36	42.85	24x2	4950	2830	750
PHS 30	PHS 30L	30	37	26	34.8	70	110	145	56	50	40	15	41	50.8	30x2	6550	3560	1130