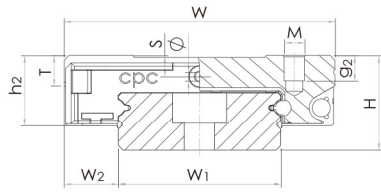


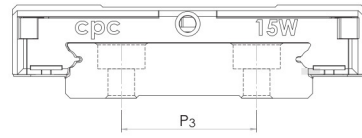
5. Dimensions and Specifications

5.2 MR-W SU Series (End seal , Bottom Seal)

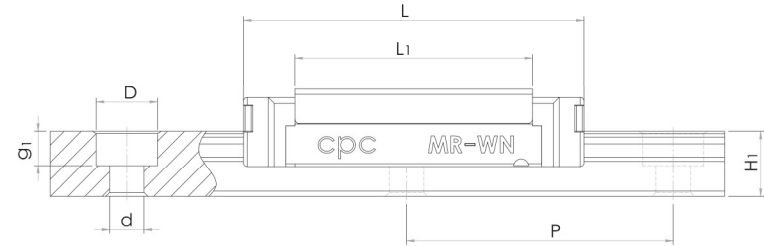
MR-W ZU Series (End seal , Bottom Seal , Lubrication Storage)



MR 2W-MR 12W

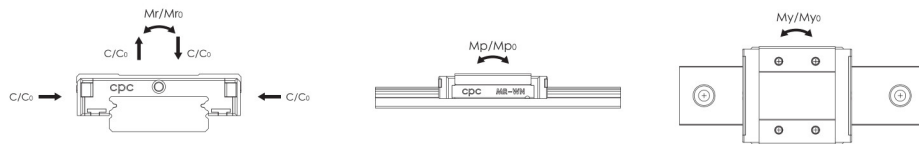


MR 15W



Model Code	Fabricate Dimensions		Rail Dimension(mm)					Block Dimension(mm)					
	H	W ₂	W ₁	H ₁	P	P ₃	D x d x g ₁	W	L	L ₁	h ₂	P ₁	P ₂
MR 15WL SU/ZU	16	9	42	9.5	40	23	8x4.5x4.5	60	74.4	57.6	12.3	35	45
MR 15WN SU/ZU	16	9	42	9.5	40	23	8x4.5x4.5	60	55.3	38.5	12.3	20	45
MR 12WL SU/ZU	14	8	24	8.5	40	-	8x4.5x4.5	40	59.4	46	10.4	28	28
MR 12WN SU/ZU	14	8	24	8.5	40	-	8x4.5x4.5	40	44.4	31	10.4	15	28
MR 9WL SU/ZU	12	6	18	7.3	30	-	6x3.5x4.5	30	50.7	39.5	8.8	24	23
MR 9WN SU/ZU	12	6	18	7.3	30	-	6x3.5x4.5	30	39.1	27.9	8.8	12	21
MR 7WL SU/ZU	9	5.5	14	5.2	30	-	6x3.5x3.5	25	40.5	30.1	7.2	19	19
MR 7WN SU/ZU	9	5.5	14	5.2	30	-	6x3.5x3.5	25	31.6	21.2	7.2	10	19
* MR 5WL SU/ZU	6.5	3.5	10	4	20	-	5.5x3x1.6	17	27.2	21.2	5.1	11	13
* MR 5WLC SU/ZU	6.5	3.5	10	4	20	-	5.5x3x1.6	17	27.2	21.2	5.1	11	13
* MR 5WN SU/ZU	6.5	3.5	10	4	20	-	5.5x3x1.6	17	21.1	15.1	5.1	6.5	13
* MR 5WNC SU/ZU	6.5	3.5	10	4	20	-	5.5x3x1.6	17	21.1	15.1	5.1	6.5	13
* MR 3WL SU/ZU	4.5	3	6	2.7	15	-	4x2.4x1.5	12	20.1	15.1	3.6	8	-
* MR 3WN SU/ZU	4.5	3	6	2.7	15	-	4x2.4x1.5	12	15	10	3.6	4.5	-
* MR 2WL SU/ZU	4	3	4	3	10	-	2.8x1.8x1.0	10	17	11.9	3.1	6.5	-

* Anticipated
Load capacities are calculated according to ISO 14728. To compare the rating life definition and the load capacities: $C_{505}=1.26x C_{1008}$



Block Dimension(mm)				Load Capacities(N)		Static Moment(Nm)			Weight		Model Code
M x g ₂	Ø	S	T	C ₁₀₀₈ (dyn)	C ₀ (stat)	Mr ₀	Mp ₀	My ₀	Block(g)	Rail(g/m)	
M4x4.5	1.8	3.3	4.5	6725	12580	257.6	93.1	93.1	200	2818	MR 15WL SU/ZU
M4x4.5	1.8	3.3	4.5	5065	8385	171.1	45.7	45.7	137	2818	MR 15WN SU/ZU
M3x3.5	1.3	3.1	4.5	4070	7800	95.6	56.4	56.4	93	1472	MR 12WL SU/ZU
M3x3.5	1.3	3.1	4.5	3065	5200	63.7	26.3	26.3	65	1472	MR 12WN SU/ZU
M3x3	1.3	2.6	4	2550	4990	45.9	26.7	26.7	51	940	MR 9WL SU/ZU
M3x3	1.3	2.6	4	2030	3605	33.2	13.7	13.7	37	940	MR 9WN SU/ZU
M3x3	1.1	1.9	3.2	1570	3140	22.65	14.9	14.9	27	516	MR 7WL SU/ZU
M3x3	1.1	1.9	3.2	1180	2095	15	7.3	7.3	19	516	MR 7WN SU/ZU
M2.5x1.5	0.9	1.2	2.3	615	1315	6.8	4.1	4.1	8	280	MR 5WL SU/ZU
M3/M2.5x1.5	0.9	1.2	2.3	615	1315	6.8	4.1	4.1	8	280	MR 5WLC SU/ZU
M2.5x1.5	0.9	1.2	2.3	475	900	4.6	2.2	2.2	6	280	MR 5WN SU/ZU
M3/M2.5x1.5	0.9	1.2	2.3	475	900	4.6	2.2	2.2	6	280	MR 5WNC SU/ZU
M2x1.4	0.3	0.8	1.8	370	800	2.5	1.9	1.9	3.4	105	MR 3WL SU/ZU
M2x1.4	0.3	0.8	1.8	280	530	1.6	0.9	0.9	3.4	105	MR 3WN SU/ZU
M2x1.3	-	-	1.3	310	625	1.6	1.2	1.2	3.0	69	MR 2WL SU/ZU

