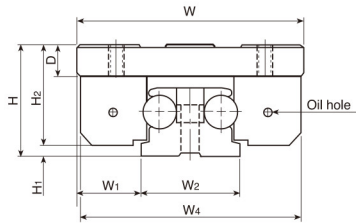
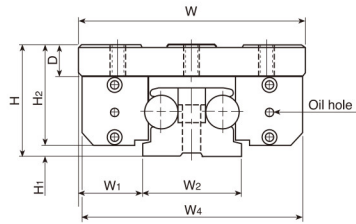


LGD Anticorrosive Linear Guide

One Block with 4 Rolling Bearings



LGD8 / LGD8L



LGD12 / LGD12L
LGD16 / LGD16L

Model No.	Shaft diameter	Dimensions of assembly			Dimensions of block									
		H	H ₁	W ₁	W	W ₄	H ₂	D	L ₁	B	B ₁	C	C ₁	S ₁ depth
LGD8	8	30	3.5	16	60	59	26.5	9	70	40	10	50	10	M6x9
LGD8L									100			80		
LGD12	12	40	3	23	82	80	37	12	100	27	14	38	12	M6x12
LGD12L									140			58		
LGD16	16	50	5	35	120	118	45	14	150	45	15	60	15	M8x16
LGD16L									190			80		

Example of identification number:

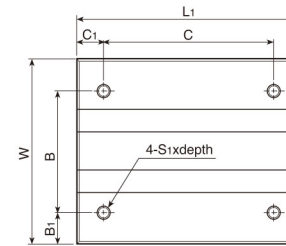
LGD12-B2-R1800C

① ② ③

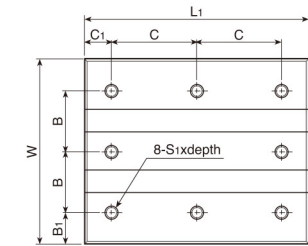
① Model No.

② Number of blocks per track rail:
B1: 1 Block B2: 2 Blocks B3: 3 Blocks, ...

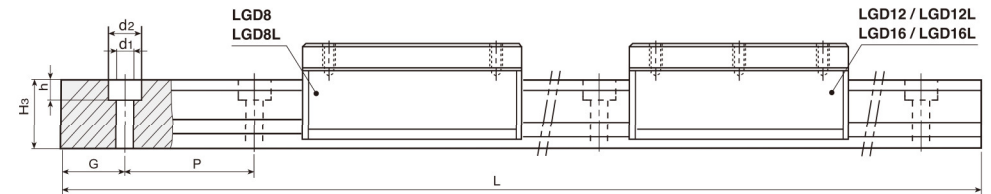
③ Length of track rail (1800mm):
Shaft: Hardened(HRC62±2)ground and chromium plated



LGD8
LGD8L



LGD12 / LGD12L
LGD16 / LGD16L



unit : mm

Dimensions of track rail								Basic dynamic load rating C (kgf)	Basic static load rating Co(kgf)	Allowable static moment			Weight		Model No.
W ₂	H ₃	d ₁	d ₂	h	P	G	L(max)			To (kgf-m)	Tx (kgf-m)	Ty (kgf-m)	Block (kg)	Track rail (kg/m)	
28	18.5	5.5	10	5.2	50	25	3,000	80	130	3.6	3.0	3.2	1.65	LGD8	
										3.6	4.6	5.5			0.28
36	24.5	6.8	12.6	6.2	50	25	4,000	180	290	5.4	4.0	4.8	3.2	LGD12	
										5.4	7.2	8.5			0.70
50	32	9	20	9	80	40	4,000	330	530	13.5	19.8	21.6	6.0	LGD16	
										13.5	35.6	38.2			1.65

