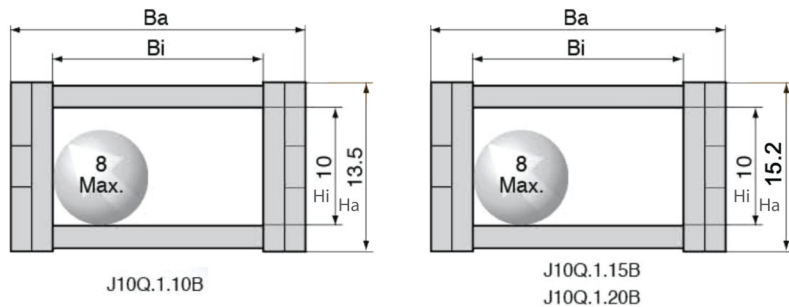


SERIES OF-J10Q.1.B

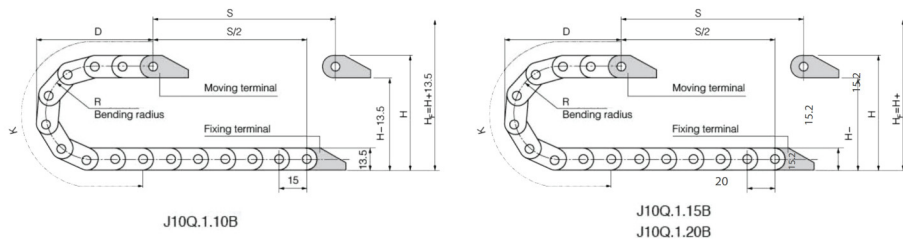
Miniature series of J10Q.1.B–Bridge type non–opening



● Delineation



● Basic technical data



- Pitch=15mm, link per meter=66, length of chain= $S/2+K$, S =stroke, $K=\pi \cdot R$ +“safety ratio” (J10Q.1.10B)
- Pitch=20 mm, link per meter=50, length of chain= $S/2+K$, S =stroke, $K=\pi \cdot R$ +“safety ratio” (J10Q.1.15B J10Q.1.20B)

	18	28	38
R	18	28	38
H	50	70	90
D	40	50	60
K	90	120	150

Actual mounting height: $H_f=H+13.5\text{mm}$ (load 0.2kg/m) (J10Q.1.10B)

Actual mounting height: $H_f=H+15.2\text{ mm}$ (load 0.2kg/m) (J10Q.1.15B J10Q.1.20B)

- Miniature series of J10Q.1.B–Bridge type non–opening

Series No.	Hi	Bi	Ha	Ba	Styles	Bending radius R	Bracket type and parameters								
							Applicable bracket type	Bore diameter $\Phi 1$	Hole distance (mm)						No.
									A	B	C	D	E	F	
J10Q.1.10B	10	10	13.5	17.5	Q.B	18.28	X_1	3.2	8	21.5	4	17.2	J10Q.1.10B–XJT		
J10Q.1.15B	10	15	15.2	23	Q.B	18.28.38	X_1	4*7L	10	C1=30.7 C2=27.3	7.5	23	J10Q.1.15B–XJT		
J10Q.1.20B	10	20	15.2	28	Q.B	18.28	X_1	3.2*7L	10	5 C1=30.5 C2=27.1	7.5	28	J10Q.1.20B–XJT		

- Note: “B” indicates that the non opening.

● Connector mounting dimension drawing

