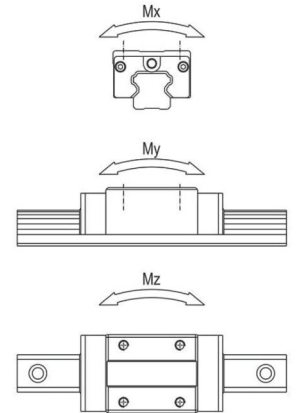
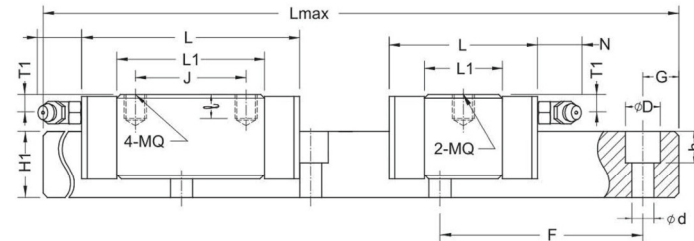
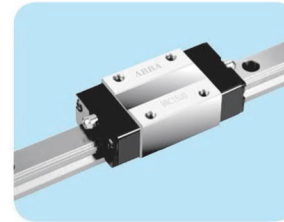
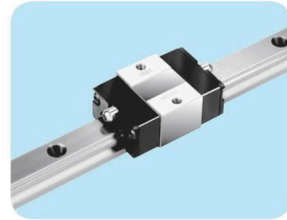
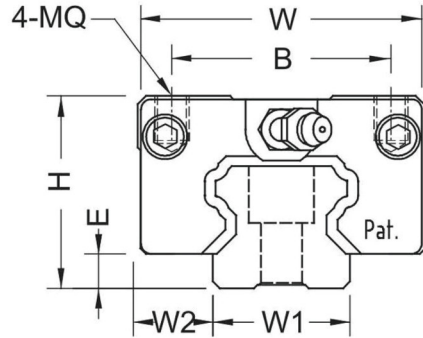


1.23 BRC-SU/U0, BRD-SU/U0



Model No.	Assembly (mm)				BR block (mm)						BR rail (mm)				
	H	W	W2	E	L	BxJ	MQxJ	L1	Oil hole	T1	(N)	W1	H1	F	dxDxh
BRC15U0	24	34	9.5	4.6	66	26x26	M4x5.6	40	ø3	4.3	5	15	14	60	4.5x7.5x5.8
BRD15U0					56										
BRC15SU					47.6										
BRD15SU					37.6										
BRC20U0	28	42	11	5	77.8	32x32	M5x6.4	48.8	M6x1	5	15.6	20	18	60	6x9.5x9.0
BRD20U0					67.8										
BRC20SU					57										
BRD20SU					47										
BRC25U0	33	48	12.5	7	88	35x35	M6x8	57	M6x1	4.8	15.6	23	22	60	7x11x9.5
BRD25U0					78										
BRC25SU					62.5										
BRD25SU					52.5										
BRC30U0	42	60	16	9	109	40x40	M8x11.5	72	M6x1	7	15.6	28	26	80	9x14x12.5
BRD30U0					99										
BRC30SU					75.6										
BRD30SU					65.6										
BRD35U0	48	70	18	9.5	109	50x50	M8x11.2	80	M6x1	8	15.6	34	29	80	9x14x12.5
BRD35SU					74.7	50x-		45.7							
BRD45U0	60	86	20.5	14	138.2	60x60	M10x13	105	M8x1	8.5	16	45	38	105	14x20x17.5

Model No.	Ref.Data (mm)		Basic Load Rating (Kgf)		Static Moment (Kgf*m)			Weight	
	Lmax	G	(C)	(Co)	Mx	My	Mz	Block(Kg)	Rail(Kg/m)
BRC15U0	4000	20	850	1350	10.1	6.8	6.8	0.17	1.4
BRD15U0			520	680	5.1	1.8	1.8		
BRC15SU			1400	2400	24	14.6	14.6	0.26	
BRD15SU			950	1400	7	4.9	4.9		
BRC20U0	4000	20	1950	3200	36.8	22.8	22.8	0.38	3.6
BRD20U0			1250	1750	17.5	6.9	6.9		
BRC20SU			2850	4800	67.2	43.2	43.2	0.81	
BRD20SU			1750	2400	33.6	11.6	11.6		
BRC30U0	4000	20	3850	6200	105.4	62	62	1.2	7.2
BRD30U0			2500	3650	62.1	20.9	20.9		
BRC30SU			236.3	10500	236.3	137.8	137.8	2.1	
BRD30SU			6500	10500	236.3	137.8	137.8		

Note: BR35 and BR45 are not equipped with self-lubricant parts.