

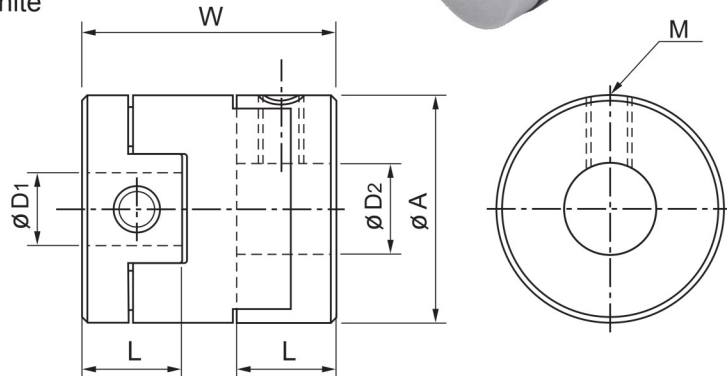
## MFL Flex couplings



- **Body material** : Aluminum alloy
- **Buffer material** : Nylon
- **Surface Treatment** : Anodizing standard white

### ■ Features

- High rigid
- High insulation
- Handy assembly
- Larger eccentricity and error of angle deviation allowable
- **Fixed mode** : Set screw type



## DIMENSION

unit:mm

Product No	A	L	W	Stock Bores D1xD2 (H8)		M
				Min D1	Max D2	
MFL-16	16	7	18	4	6	M3
MFL-20	20	9	23	4	8	M4
MFL-25	25	11	28	5	10	M5
MFL-32	32	13	33	8	14	M6
MFL-40	40	14	32	10	16	M6
MFL-50	50	17	38	12	20	M8

## SPECIFICATIONS

\*Max. Bore Moment of Inertia

\*\*Max. Bore Mass

Product No	Rated Torque (N.m)	Max. Torque (N.m)	Max. Rotational Frequency (min <sup>-1</sup> )	Moment* of Inertia (kg.m <sup>2</sup> )	Error of Eccentricity (mm)	Errors of Angularity (°)	Mass** (g)
MFL-16	0.7	1.4	9500	3.0X10 <sup>-7</sup>	1.0	3°	6.5
MFL-20	1.2	2.4	7600	1.1X10 <sup>-6</sup>	1.5	3°	14
MFL-25	2.0	4.0	6100	2.7X10 <sup>-6</sup>	2.0	3°	27
MFL-32	4.5	9.0	4800	9.0X10 <sup>-6</sup>	2.5	3°	45
MFL-40	9.0	18.0	3800	2.2X10 <sup>-5</sup>	3.0	3°	80
MFL-50	18.0	36.0	3100	6.3X10 <sup>-5</sup>	3.5	3°	150

### ■ When Ordering

When Placing an order, make sure to include product No. and stock bores (both sides) of product.

**MFL-25** - φ8 - φ10      Product No :      D1    D2